

SIGNAL HILL POLICE DEPARTMENT

QUARTERLY REPORT

JULY- SEPTEMBER 2022

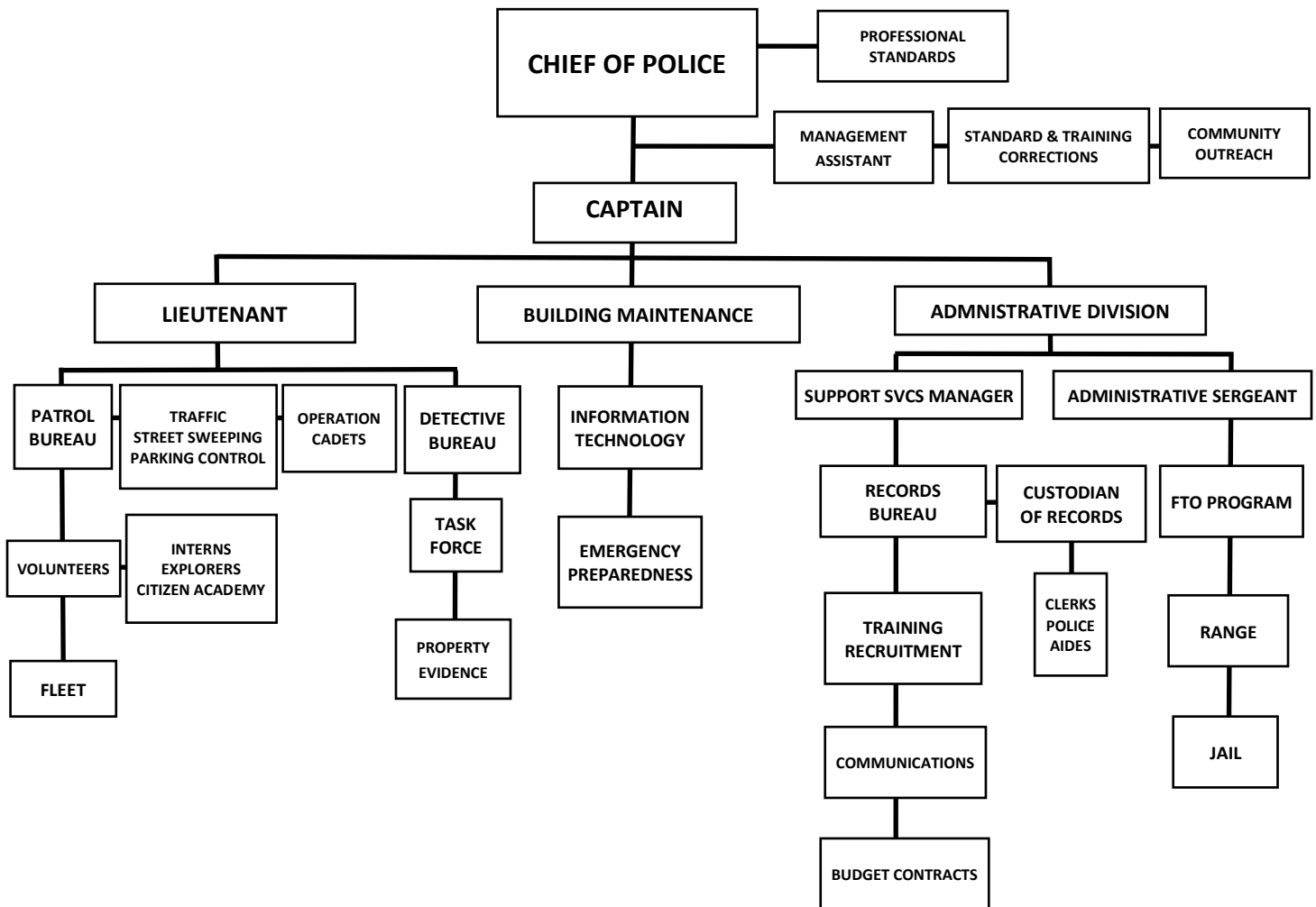


TABLE OF CONTENTS

ADMINISTRATION BUREAU	3
Organizational Chart	3
Personnel	4
Use of Force	5
Complaints and Findings	5
 OPERATIONS BUREAU	 6
Response Time (in progress)	6
Calls for Service	6
Police Reports	7
Mental Health Related Contacts	7
Parking Citations	8
Traffic Citations	8
Traffic Division	8
Racial Identification and Profiling Act (RIPA)	9
Traffic Stop Detentions and Results (by Race)	9
RIPAs (with Detainees)	10
Search and Yield Results	10
 INVESTIGATIONS BUREAU	 11
Group A Crimes	11
Group B Crimes (Arrests Only)	11
 Reported Arrests	
Arrests (by Race)	12
Juvenile Arrests (by Race)	12

ADMINISTRATION BUREAU

ORGANIZATIONAL CHART



PERSONNEL

Non-Sworn Staff Openings:

3

(2) Dispatcher/Jailer
(1) EOC Coordinator- Part-time

Sworn Staff Openings:

4

(4) Police Officer

Total Non-Sworn Staff: 16

Total Sworn Staff: 29

Total Police Department Staff: 45

Injured on Duty/Long Term Leave: 1

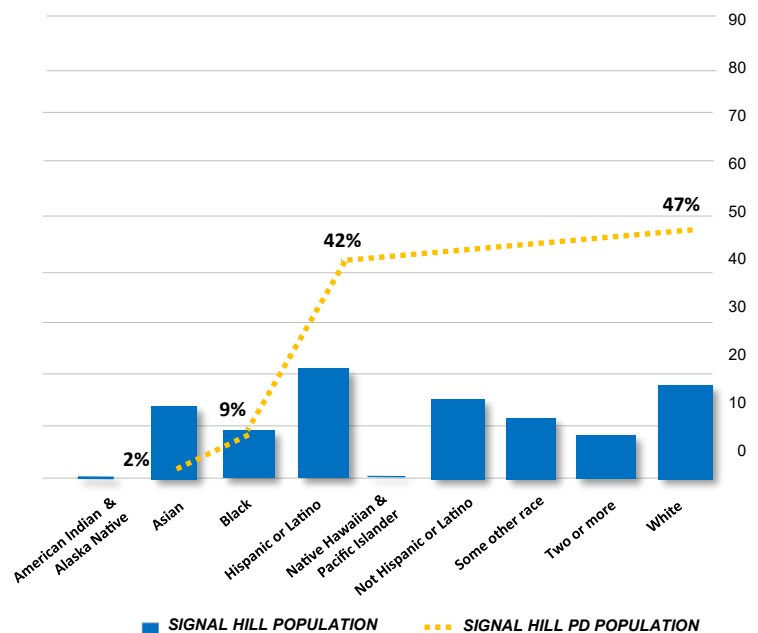
GENDER	DEPT PERSONNEL	%	SWORN PERSONNEL	%	NON-SWORN PERSONNEL	%	DEPT SUPERVISION	%
Male	25	56%	24	83%	0	0%	8	73%
Female	20	44%	5	17%	16	100%	3	27%
TOTAL	45	100%	29	100%	16	100%	11	100%

RACE	DEPT PERSONNEL	%	SWORN PERSONNEL	%	NON-SWORN PERSONNEL	%	DEPT SUPERVISION	%
White/Non-Hispanic	21	47%	17	59%	4	25%	6	55%
White/Hispanic	19	42%	9	31%	10	63%	4	36%
Black	4	9%	3	10%	1	6%	1	9%
Asian	1	2%	0	0%	1	6%	0	0%
TOTAL	45	100%	29	100%	16	100%	11	100%

SIGNAL HILL POPULATION = 11,848*

RACE	TOTAL	%
American Indian & Alaska Native	194	1%
Asian	2638	14%
Black	1626	9%
Hispanic or Latino	4208	22%
Native Hawaiian & Pacific Islander	93	.5%
Not Hispanic or Latino	2831	15%
Some other Race	2364	12.5%
Two or More	1485	8%
White	3448	18%
TOTAL	18887±	100%

*Based on the 2020 U.S Census Bureau
± Residents may have reported in multiple categories



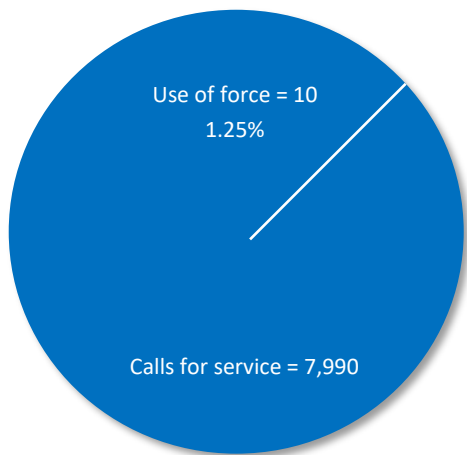
July – Sept 2022

USE OF FORCE

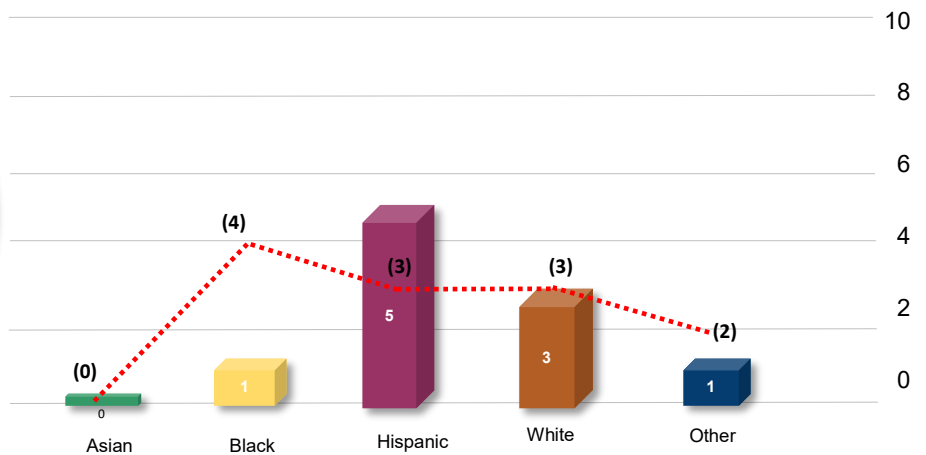
July– Sept 2022 Totals

	CALLS FOR SERVICE	USE OF FORCE	USE OF FORCE%
JULY	743	0	0
AUGUST	691	0	0
SEPTEMBER	768	0	0

2021 Use of Force per Calls for Service



2021 Use of Force by Race

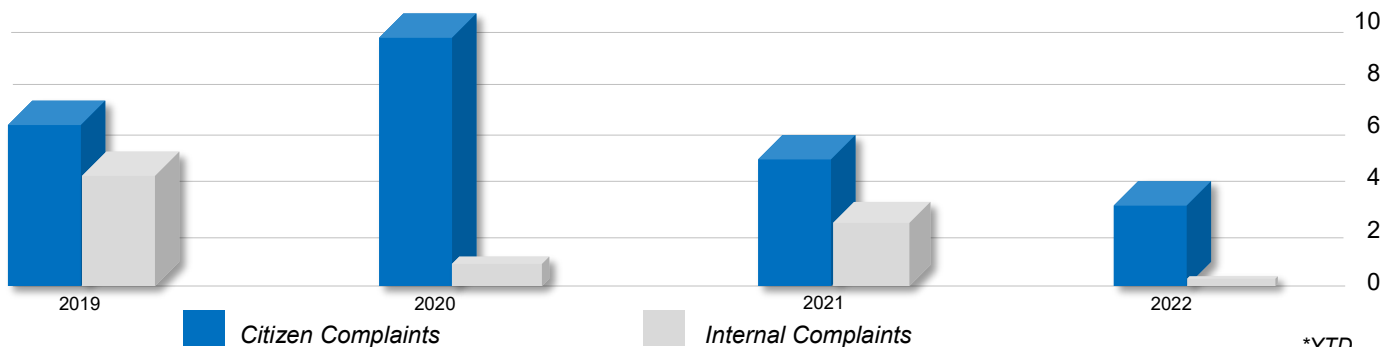


2022 Use of Force

COMPLAINTS

Annual Complaints and Findings

YEAR	CITIZEN COMPLAINTS	PENDING	SUSTAINED	INTERNAL COMPLAINTS	PENDING	SUSTAINED
2019	7	0	0	5	0	5
2020	11	0	1	1	0	1
2021	6	0	1	3	0	1
2022*	4	0	0	0	0	0



*YTD

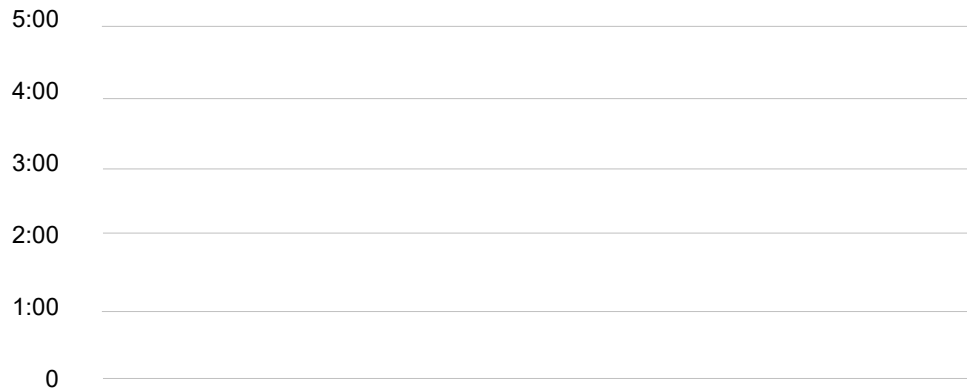
July – Sept 2022

OPERATIONS BUREAU

RESPONSE TIME (*in progress*)

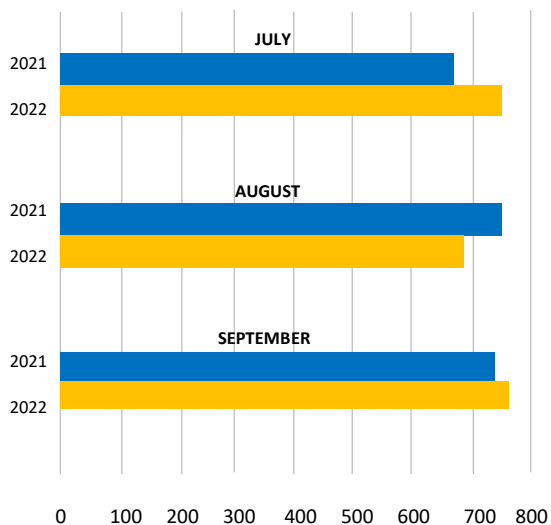
	JULY 2022	AUGUST 2022	SEPTEMBER 2022
EMERGENCY	-	-	-
NON-EMERGENCY	-	-	-

Average Response Time

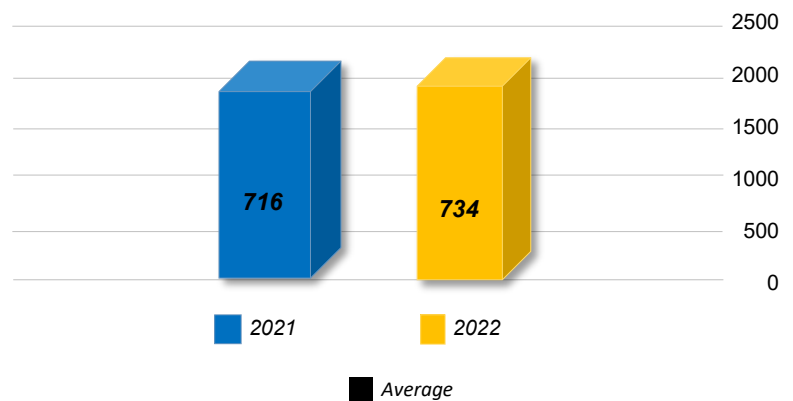


CALLS FOR SERVICE

	JULY 2022	AUGUST 2022	SEPTEMBER 2022
Total Calls for Service	743	691	768



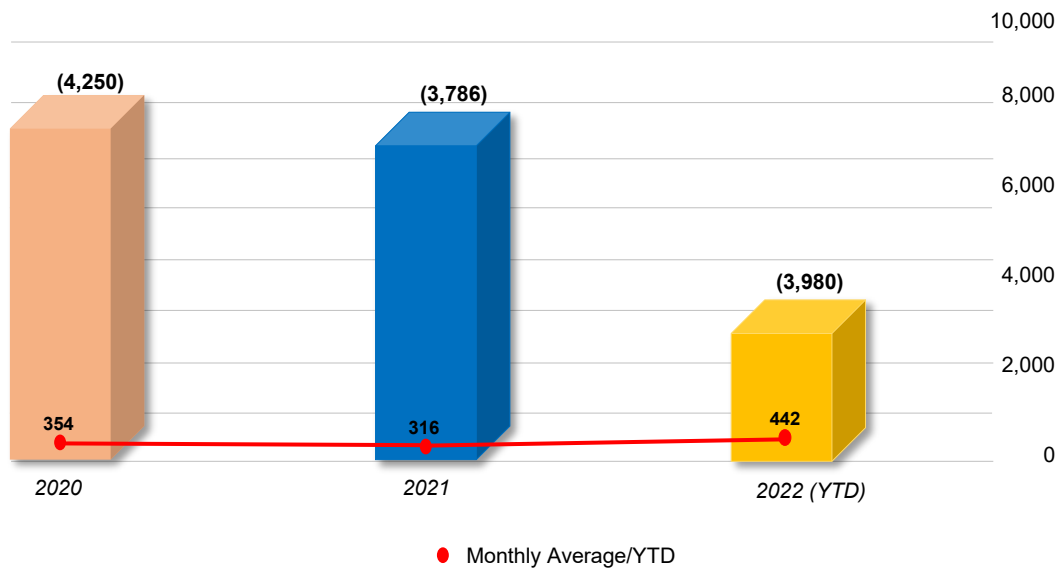
2021-2022 2nd Quarter Average Comparison



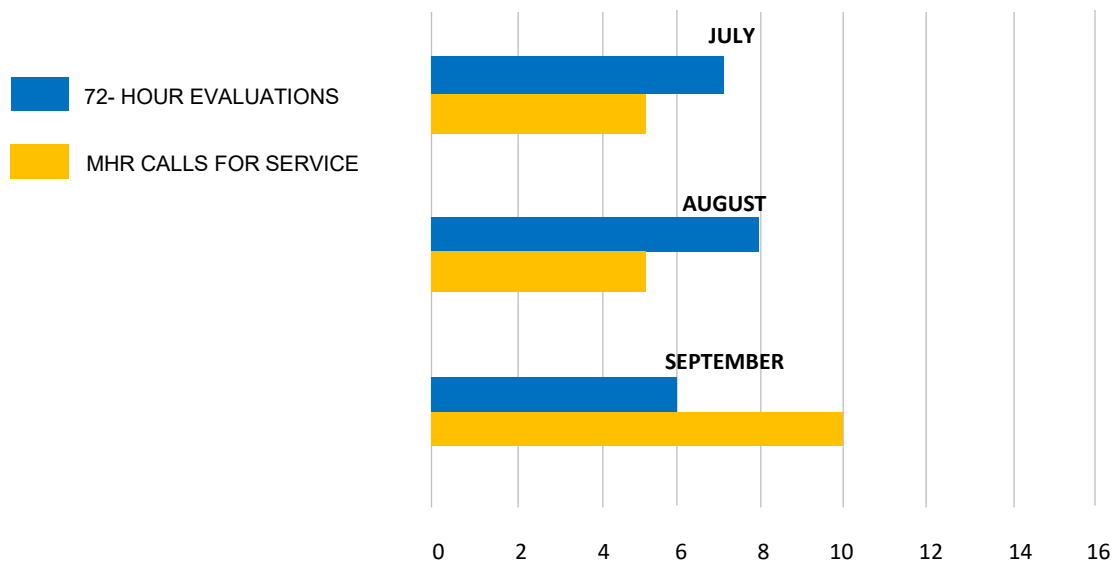
July – Sept 2022

POLICE REPORTS

	JULY 2022	AUGUST 2022	SEPTEMBER 2022
Police Reports	438	377	365

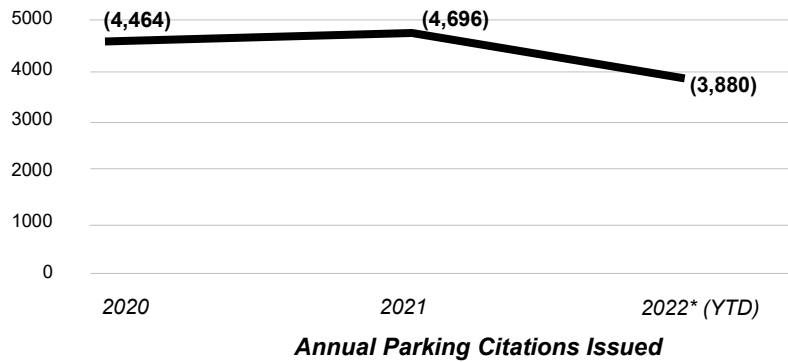
**MENTAL HEALTH RELATED (MHR) Contacts**

	JULY 2022	AUGUST 2022	SEPTEMBER 2022
72-Hour Evaluations	7	8	6
MHR Calls for Service	5	5	10

**July – Sept 2022**

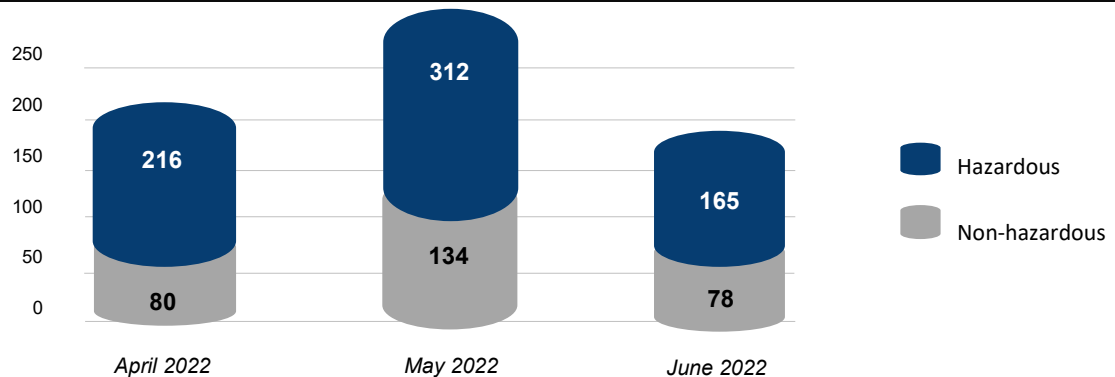
PARKING CITATIONS

	JULY 2022	AUGUST 2022	SEPTEMBER 2022
Parking	483	687	461



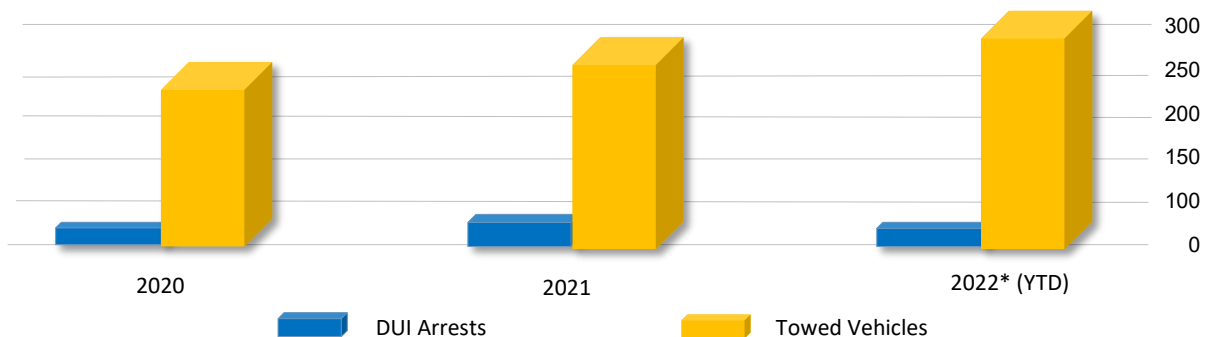
TRAFFIC CITATIONS

	JULY 2022	AUGUST 2022	SEPTEMBER 2022	2021 (YTD)	2022 (YTD)
Hazardous	216	312	165	1361	1771
Non-Hazardous	80	134	78	662	722



TRAFFIC DIVISION

	JULY 2022	AUGUST 2022	SEPTEMBER 2022	2020	2021	2022 (YTD)
DUI Arrests	3	3	6	57	65	46
Towed Vehicles	40	43	29	259	296	305



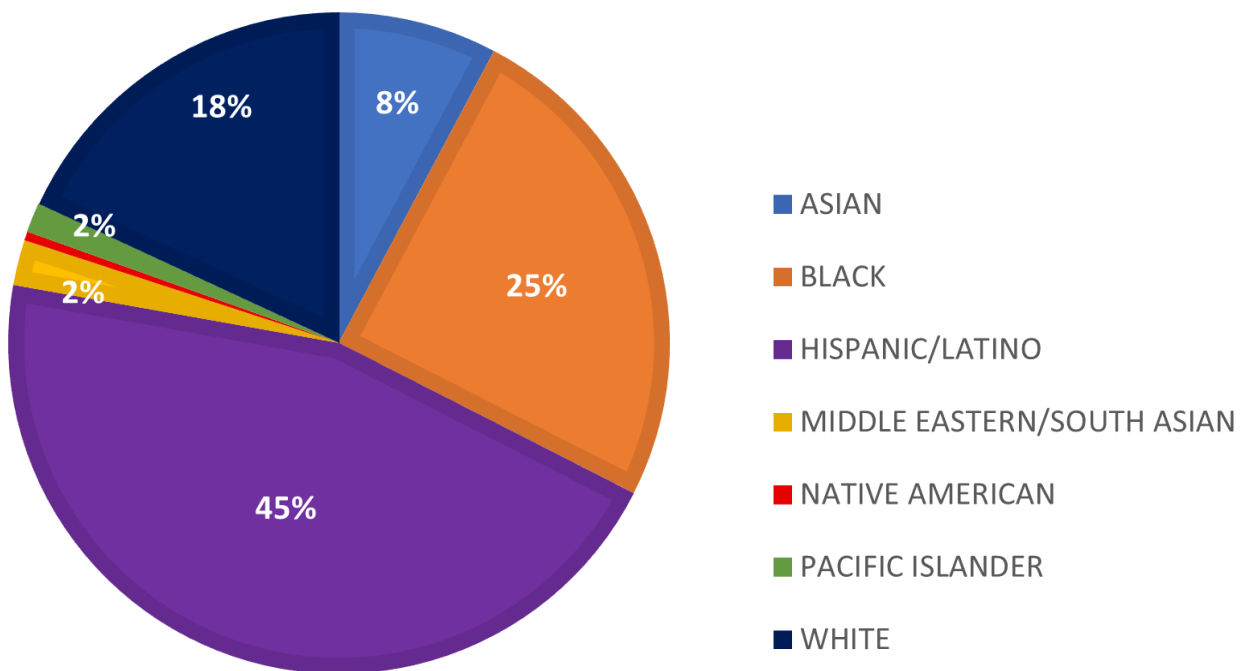
July – Sept 2022

RACIAL IDENTIFICATION and PROFILING ACT (RIPA)

In accordance with California Assembly Bill 953, the Signal Hill Police Department began collecting data regarding subject detentions. The Department of Justice (DOJ) required agencies to collect data as of January 2022. Among other things, data collected includes the perceived race or ethnicity, gender and approximate age of person detained, reason (s) for detention, whether or not a search was conducted and the result (s) of the detention.

Total Detentions & Results (by Race)

3rd Quarter– July through September 2022

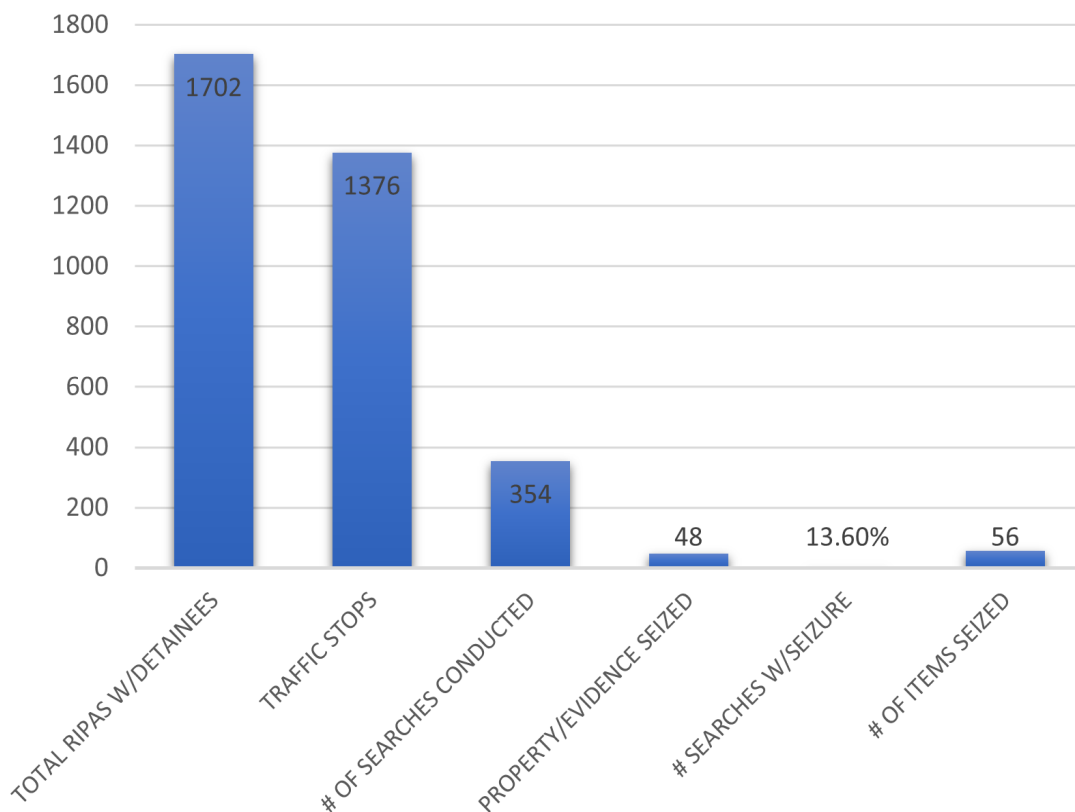
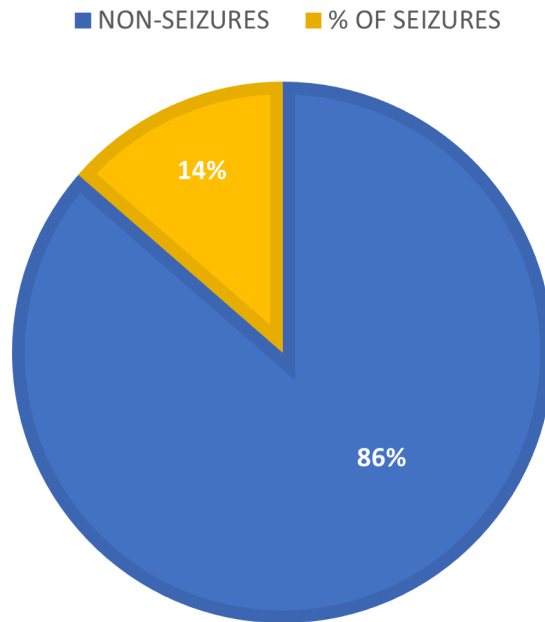


RACE	TOTAL	%
ASIAN	144	8%
BLACK	458	25%
HISPANIC/LATINO	839	45%
MIDDLE EASTERN/SOUTH ASIAN	41	2%
NATIVE AMERICAN	8	.4%
PACIFIC ISLANDER	27	1.5%
WHITE	335	18.1%
TOTAL	1852	100%

July – Sept 2022

TOTAL RIPAs (with Detainees)**3rs Quarter– July through September 2022**

TOTAL RIPAS W/DETAINEES	1702
TRAFFIC STOPS	1376
# OF SEARCHES CONDUCTED	354
PROPERTY/EVIDENCE SEIZED	48
% SEARCHES W/SEIZURE	13.6%
# OF ITEMS SEIZED	56

***July – Sept 2022***

INVESTIGATION BUREAU

GROUP A CRIMES

	JULY 2022	AUG 2022	SEPT 2022	2021 (YTD)	2022 (YTD)	2021-2022 % CHANGE
Homicide	0	0	0	0	0	▲0.00%
Sexual Assault	0	0	0	1	1	▲0.00%
Robbery	2	3	3	19	24	▲26.32%
Aggravated Assault	5	3	3	27	41	▲51.85%
TOTAL VIOLENT CRIME	7	6	6	47	66	▲40.73%
Residential Burglary	3	6	1	38	30	▼-21.05%
Non-Residential Burglary	9	6	6	31	37	▲19.35%
Larceny*	13	32	33	330	304	▼-7.88%
Arson	1	2	2	2	6	▲200.00%
TOTAL PROPERTY CRIME	26	48	42	401	377	▼-5.99%

* this category includes shoplifting, petty theft and auto burglary

GROUP B CRIMES (Arrests Only)

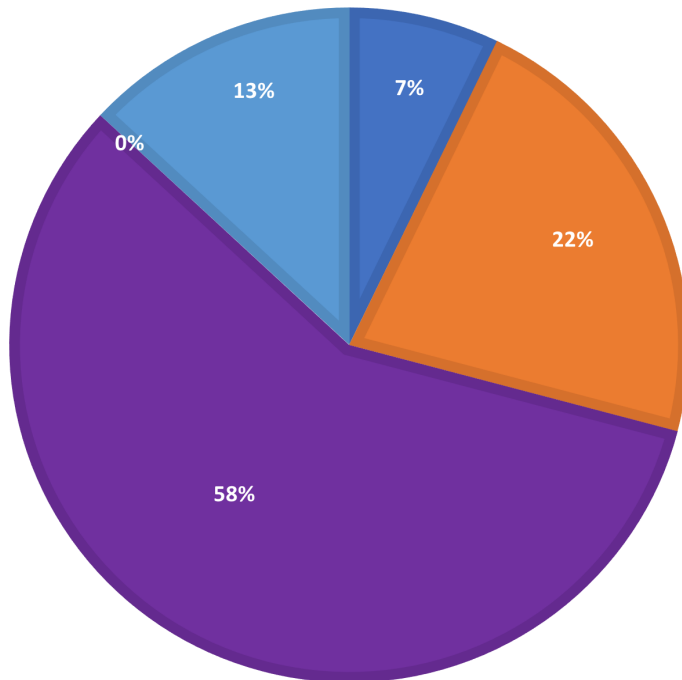
	JULY 2022	AUG 2022	SEPT 2022	2021 (YTD)	2022 (YTD)	2021-2022 % CHANGE
Adult Felony	17	15	12	138	151	▲9.42%
Adult Misdemeanor	67	66	54	488	517	▲5.94%
Juvenile Felony	0	0	0	2	4	▲100.00%
Juvenile Misdemeanor	0	0	1	2	6	▲200.00%
TOTAL	84	81	67	630	678	▲7.62%

July – Sept 2022

REPORTED ARRESTS

	JULY 2022	AUGUST 2022	SEPTEMBER 2022
Total Arrests	85	83	70

■ OTHER/ASIAN
 ■ BLACK
 ■ HISPANIC/LATINO
 ■ UNKNOWN
 ■ WHITE

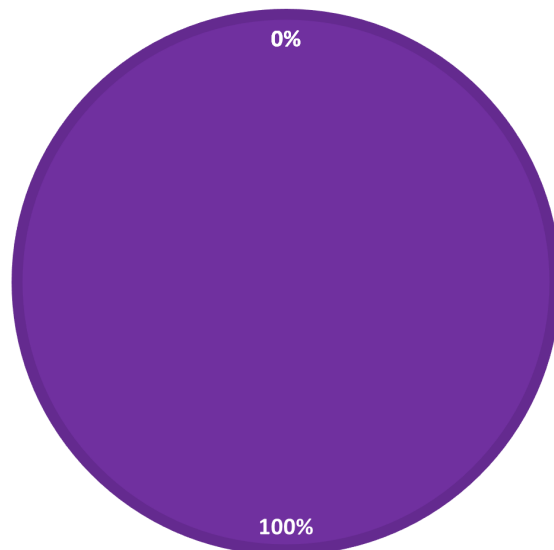


RACE	TOTAL	%
OTHER/ASIAN	17	7.2%
BLACK	52	22%
HISPANIC/LATINO	137	57.8%
UNKNOWN	0	0
WHITE	31	17%
TOTAL	237	100%

JUVENILE ARRESTS (by RACE)

RACE	TOTAL	%
OTHER/ASIAN	0	0%
BLACK	0	0%
HISPANIC/LATINO	1	100%
UNKNOWN	0	0%
WHITE	0	0%
TOTAL	1	100%

■ OTHER/ASIAN
 ■ BLACK
 ■ HISPANIC/LATINO
 ■ UNKNOWN
 ■ WHITE



July – Sept 2022