



CITY OF SIGNAL HILL

2175 Cherry Avenue ♦ Signal Hill, CA 90755-3799

NOTICE OF STREET WORK

The City of Signal Hill Public Works Department has contracted with Excel Paving Co. to complete street repair work on **Orange Avenue, between Spring Street and Hill Street** beginning Wednesday, April, 10, 2019 and continuing for approximately four (4) weeks. During this repair project, traffic lanes on Orange Avenue may be narrowed, shifted, or closed to allow the contractor to work safely; with the majority of extended duration lane closures occurring on **Friday, April 12 and Saturday, April 13**. Work will take place **between the hours of 7:00 AM – 6:00 PM.**

While lane closures are expected, local residents and businesses will be allowed vehicle access to and from their private property, and driveways are anticipated to remain open. In areas where the contractor is scheduled to work, temporary **“No Parking”** signage will be posted 48 hours in advance. Attached to this notice you will find a map showing the detour plan for the scheduled road closures.

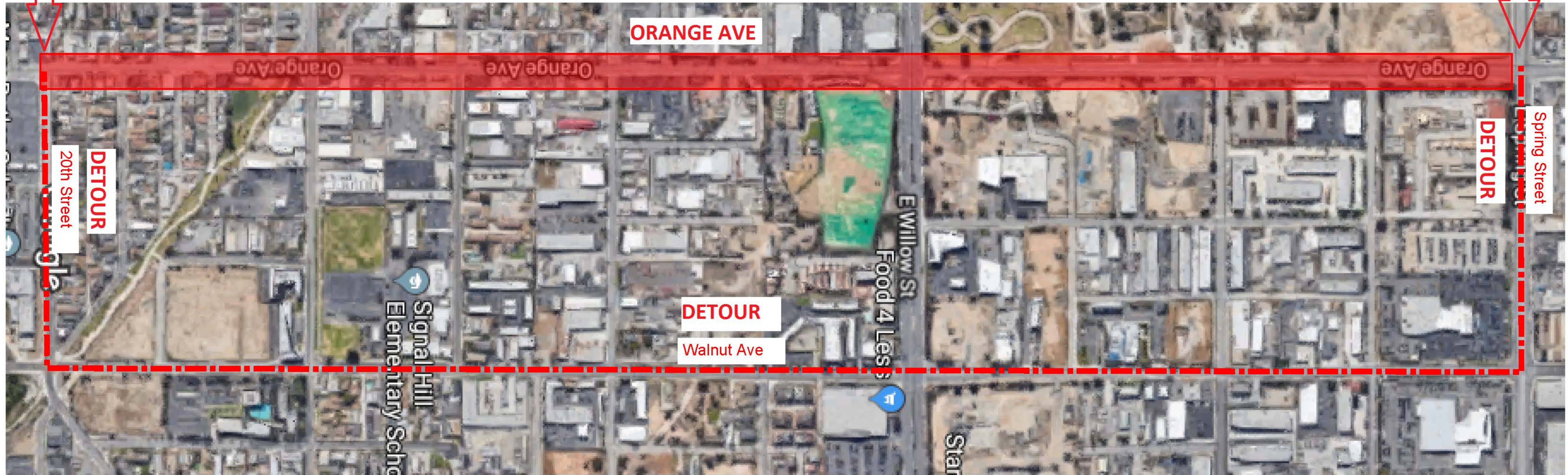
We understand that projects such as this will cause some inconvenience to you and it is our goal to complete this work in the timeliest manner practical. Your cooperation in observing all traffic control, parking restrictions, and flagmen is greatly appreciated.

Should you have any questions or concerns, please do not hesitate to call the Public Works Department at (562) 989-7352, or the Public Works inspector for this project can also be reached at (562) 335-3624.

Traffic Control Detour Route
Orange Ave Rehab
Excel Paving Company
Project No. 5649

DETOUR BEGIN/END LIMITS

DETOUR BEGIN/END LIMITS



-  Detour Route
-  Work Area

Construction Notes

1. Work Hours: 7:00 AM - 6:00 PM.
2. All traffic control to adhere to WATCH Manual.
3. All traffic will be detoured to Walnut Ave, between Spring St and 20th St.

ROADS CLOSURES ON ORANGE AVENUE WILL BE IN EFFECT ON FRIDAY APRIL 12, AND SATURDAY, APRIL 13